

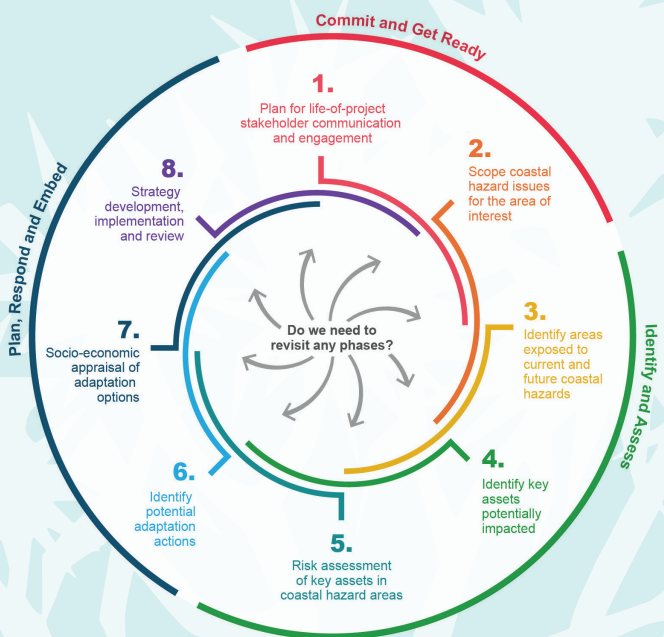
The QCoast₂₁₀₀ Program provides the **funding, tools and technical support** to enable all Queensland coastal local governments to progress the preparation of plans and strategies to address coastal hazard risks.

BACKGROUND | The QCoast₂₁₀₀ Program is a \$12M Queensland State Government commitment made in direct response to the LGAQ's advocacy on behalf of coastal local governments. Officially launched on 2 June 2016, the Program represents an unprecedented opportunity for local governments impacted by coastal hazards to get on the front foot in adaptation planning to implement cost-effective mitigation measures over the medium and long term, plan for development and growth, collaborate regionally and seek investment opportunities. The Program is due for completion in October 2020.

WHAT IS A CHAS? | The Program's Minimum Standards & Guidelines provides guidance on all 8 phases of a Coastal Hazard Adaptation Strategy (CHAS). The Guidelines have been prepared specifically to assist local governments in the development of their adaptation strategies in a consistent and systematic manner to enable timely and effective local adaptation decision-making across key areas of local government planning and operations.

PROGRAM ACHIEVEMENTS

- 31 out of 41 eligible coastal councils in Queensland are progressing with a CHAS
- All 'at risk' major urban centres and more than 90% of the 'at risk' population along the Queensland coast are included.
- 48 projects have been approved to date.
- Honourable Mention (Excellence in Environment & Sustainability) – 2019 IPWEA Australasia Excellence Awards
- Winner (Climate Adaptation) – 2019 Australian Coastal Award
- Winner (Environment & Sustainability) – 2018 IPWEAQ



<p>VISIT QCoast₂₁₀₀ website qcoast2100.com.au</p>	<p>PARTICIPATE Knowledge & Information Sharing Forums</p>	<p>ENQUIRE Face to Face Briefing Sessions</p>	<p>READ Quarterly e-newsletter</p>	<p>FOLLOW Social Media #QCoast2100</p>
--	--	--	---	---

Please contact the QCoast₂₁₀₀ Project Officer if you have any further queries.

EMMA SCHOFIELD QCoast₂₁₀₀ Project Officer, LGAQ
 t 07 3000 2255 e Emma_Schofield@lgaq.asn.au

