

# Adapting to the Bribie Island Breakthrough - Jellicoe Street, Golden Beach

Sam Cook – Coastal Planning Officer

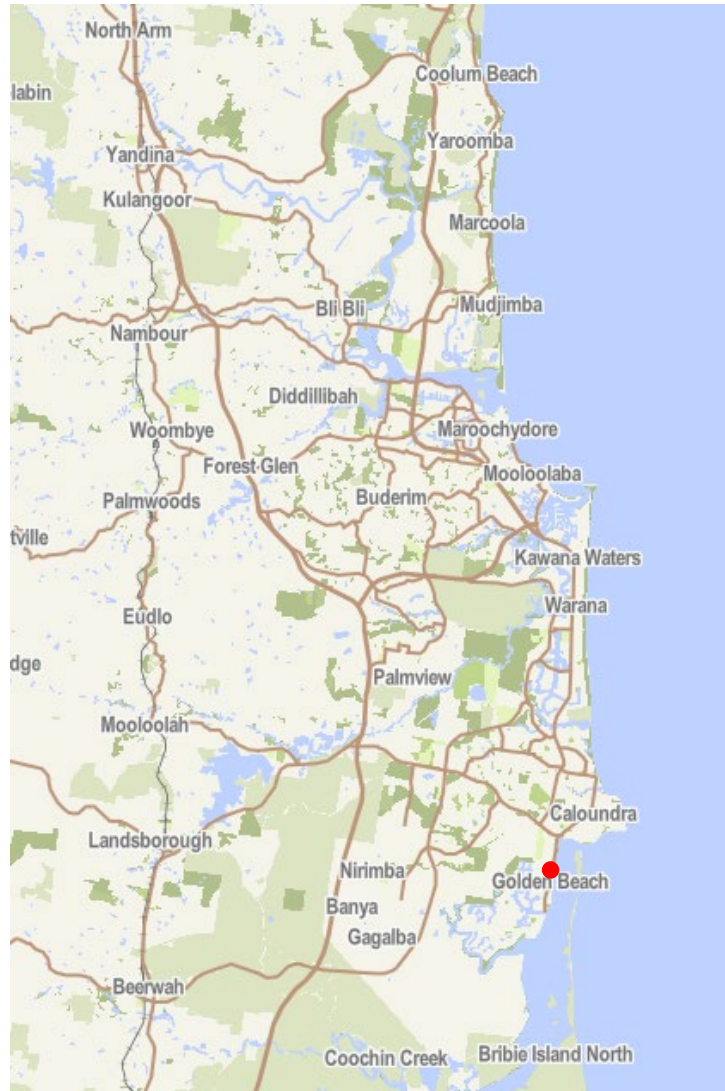
# Agenda

- Location & History
- Bribie Island Breakthrough
- The site and issues
- Design and Approvals
- Construction
- Living Seawall Tiles
- Completion
- Lessons learned
- In the meantime!
- Whats next?





# Where are we?





# Bribie Island Breakthrough





# Direct impact!



November 2021



March 2022



# Site & Project



## Project Details

- New 80lm seawall constructed in response to Bribie Island Breakthrough
- Parkland raised to 2m AHD (approx. 850-900mm)
- 97 living seawall tiles fitted and monitoring program initiated with USC
- New 4m wide overtopping slab/public walkway which is resilient to climate hazards
- Parkland refurbished (shelter, seats, new balustrades etc)
- New beach access
- New DDA compliant binoculars for viewing shorebirds

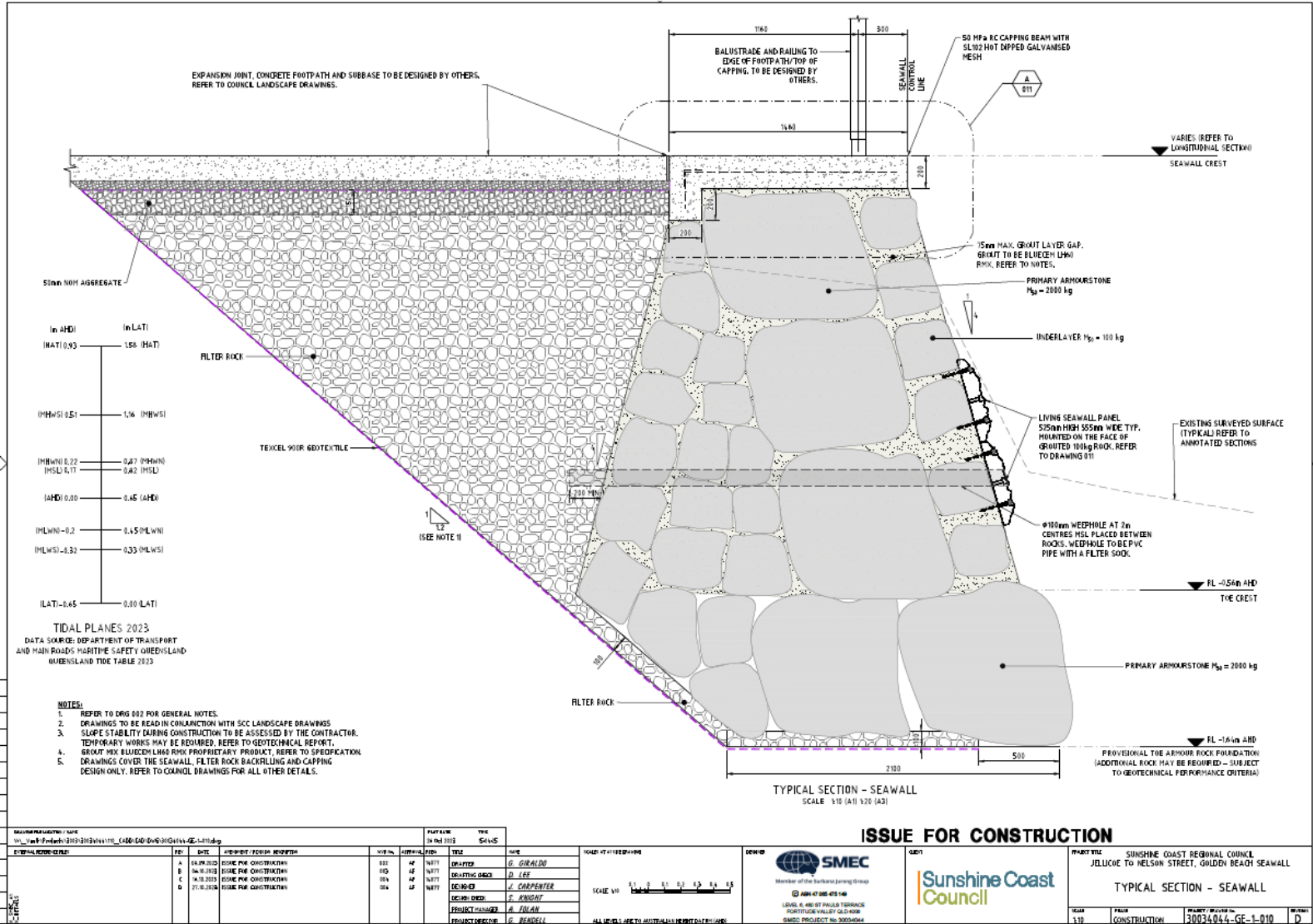


# The issues



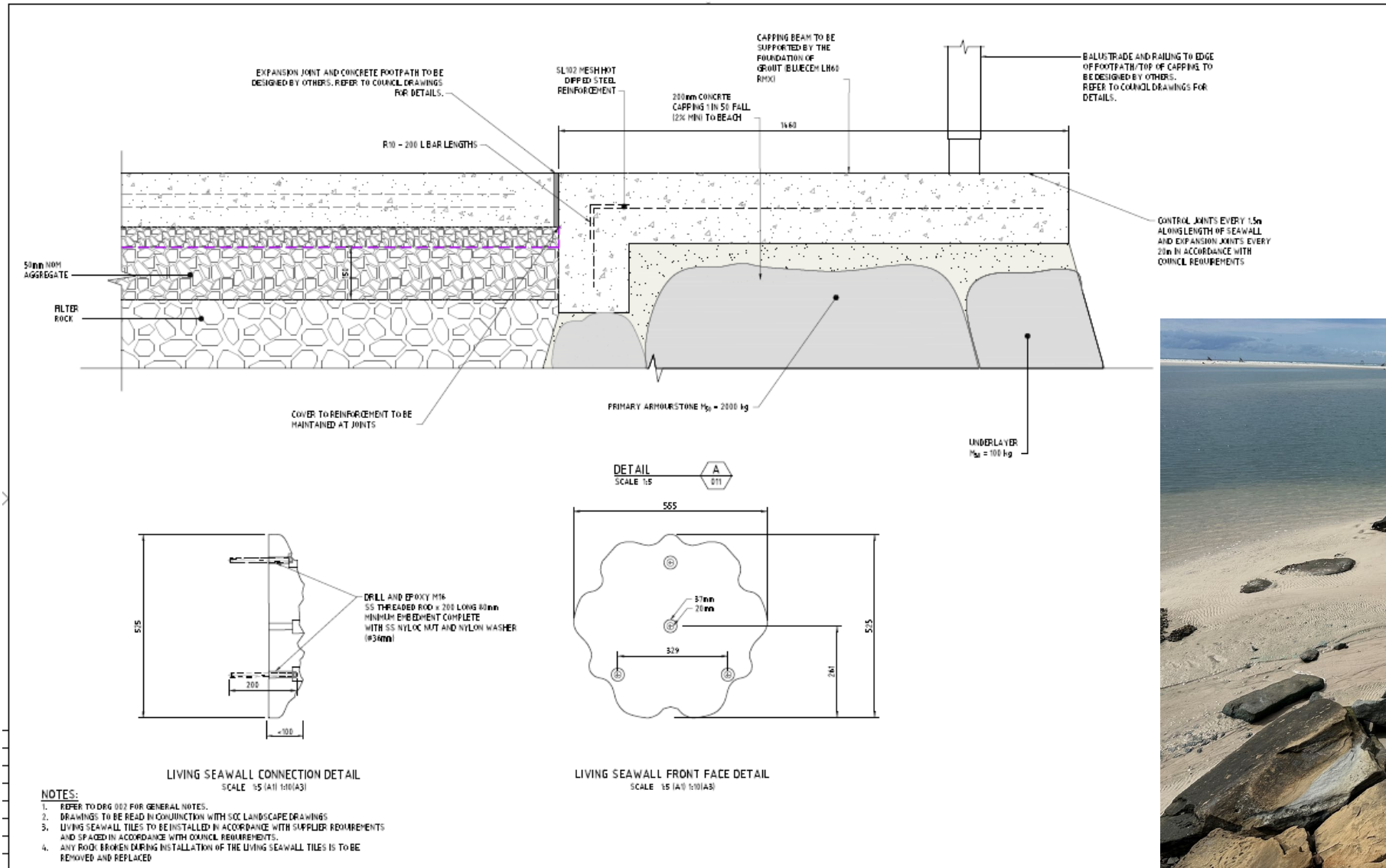


# Design and Approvals





# Design and Approvals





# Getting started!





# Construction





# Construction





# Construction





# QCoast Site Visit



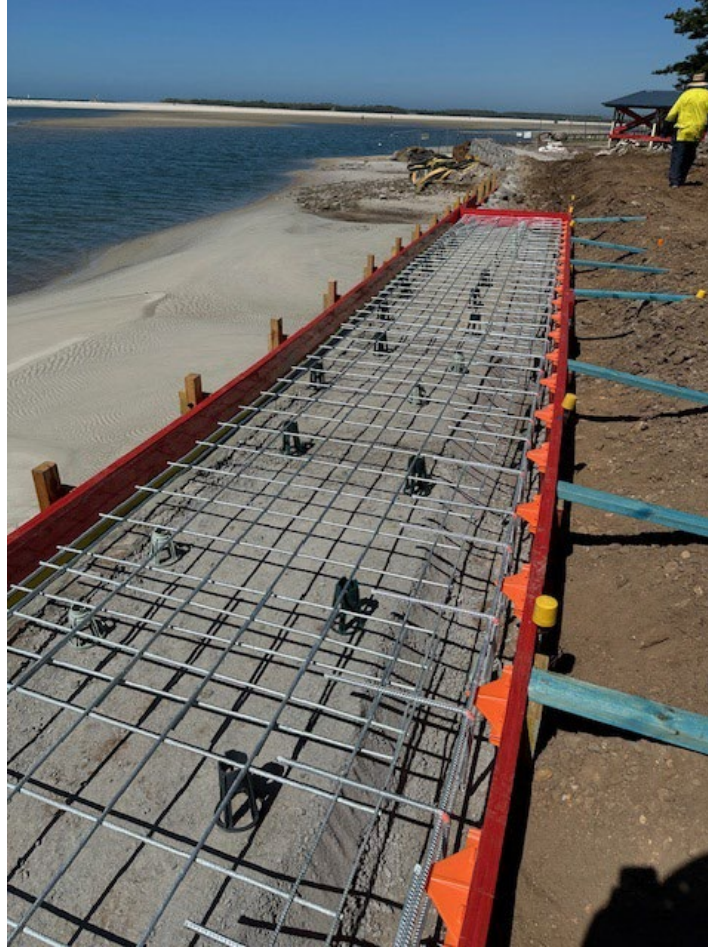


# Construction



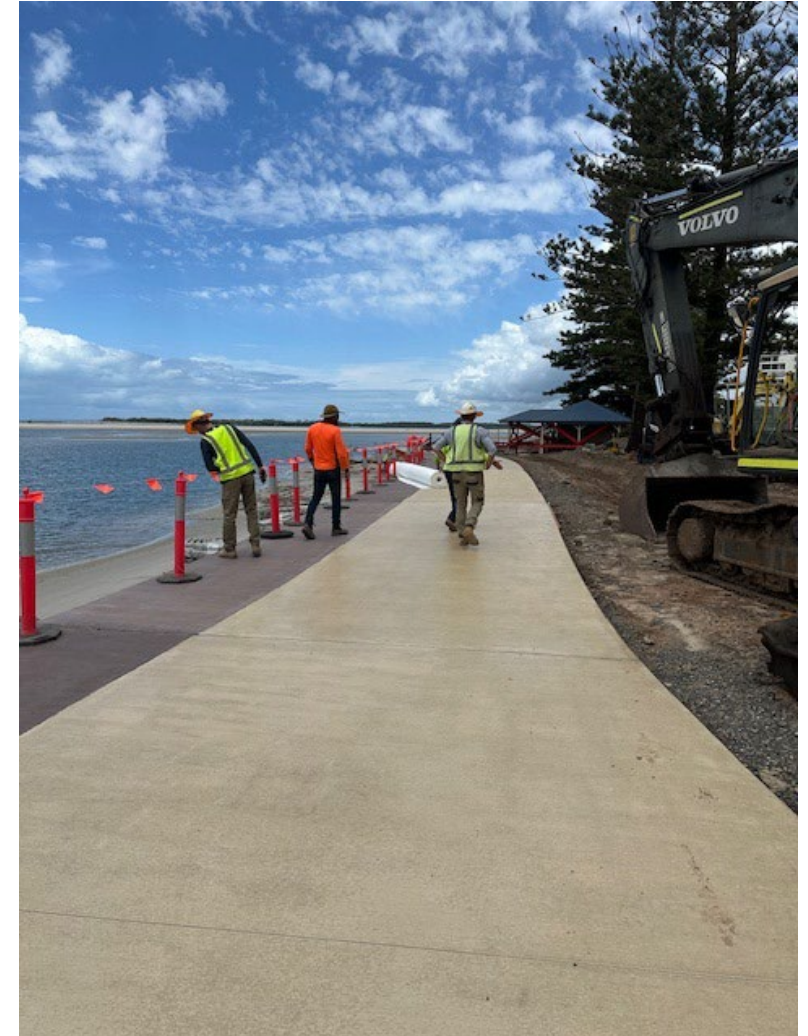


# Construction – Wall and Capping



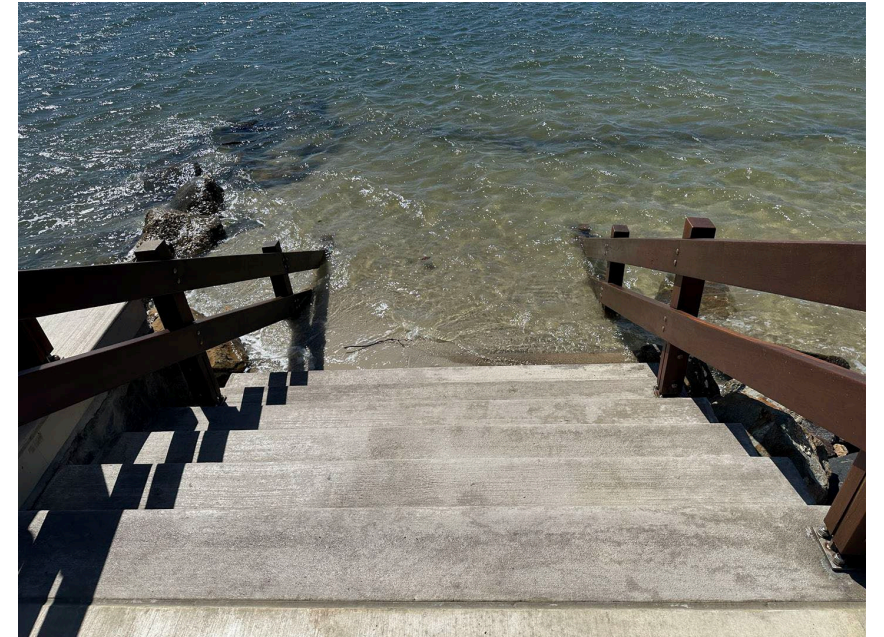


# Construction – Path/Overtopping Slab





# Beach Access





# Shelter



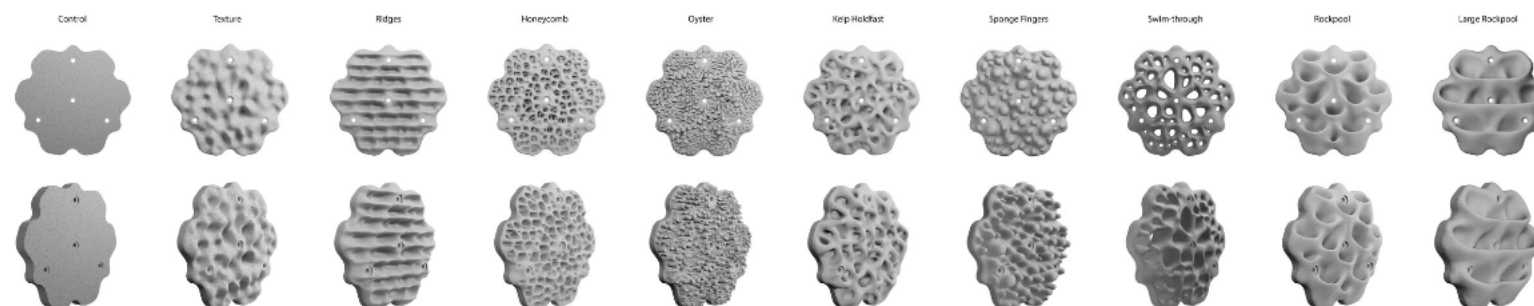
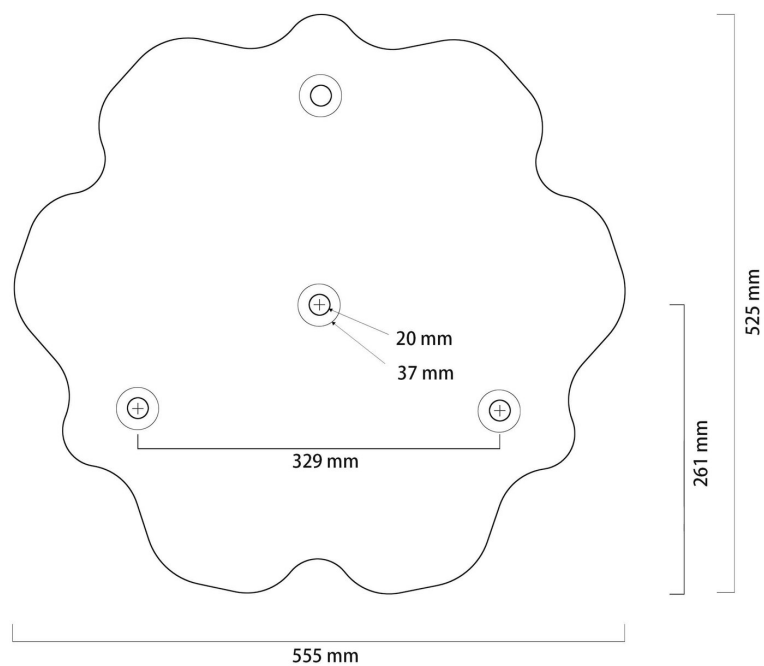


# Shorebird Binoculars



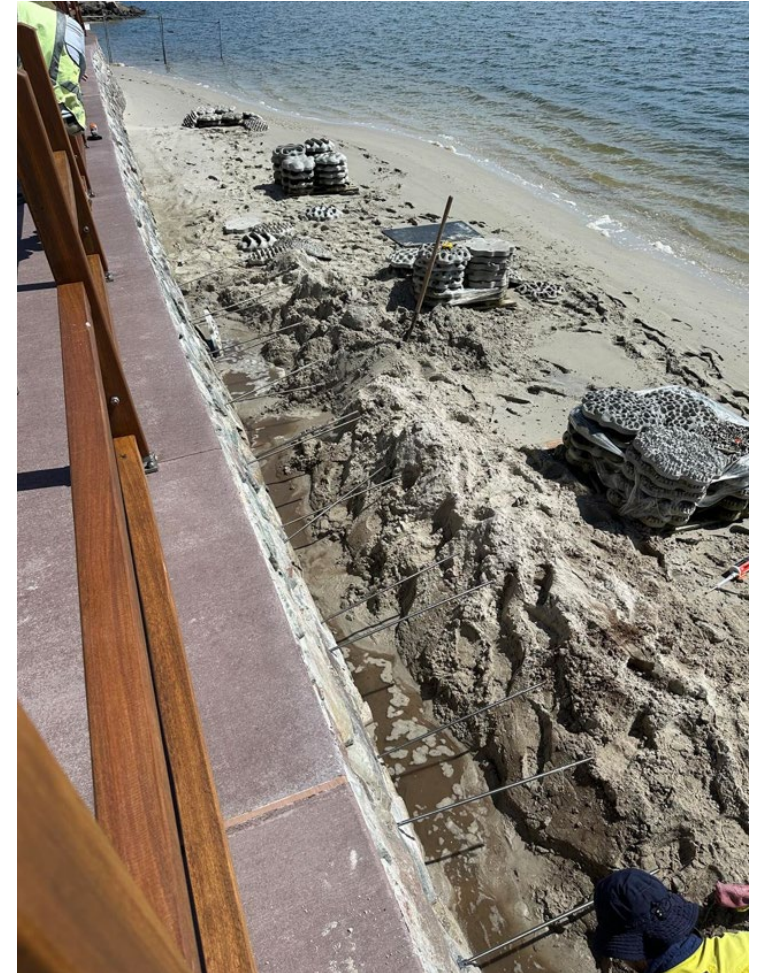


# Living Seawall Tiles





# Living Seawall Tiles





# LSW Tiles





# LSW Tiles





# LSW Monitoring



*Figure 1. The three investigated sites included control sites (bare sediment and a nearby rock wall) and the new rock wall with the Living Seawall tiles attached. At each site, five cameras were deployed around the site, with two facing along the edge from each end of the wall and three were positioned evenly spread along the wall facing the tiles. The control bare and wall sites were surveyed once, while three separate sections of the rock wall were surveyed.*





# Completion



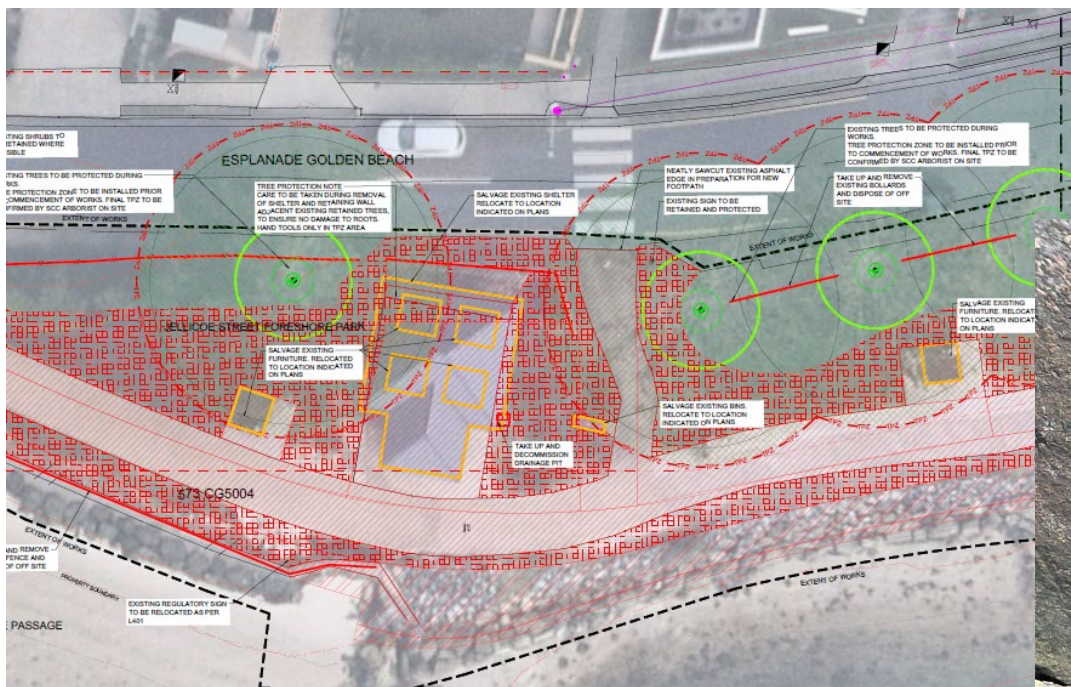


# Completion





# Lessons learned





# In the meantime!





# Whats next?



- TS Onslow – Naval Cadets Site
- Erosion Post Seth
- Nourishment
- Completed by end of 2025
- 208m of wall
- \$





# Whats next?





Thanks for listening,  
any questions?



[sunshinecoast.qld.gov.au](http://sunshinecoast.qld.gov.au)