

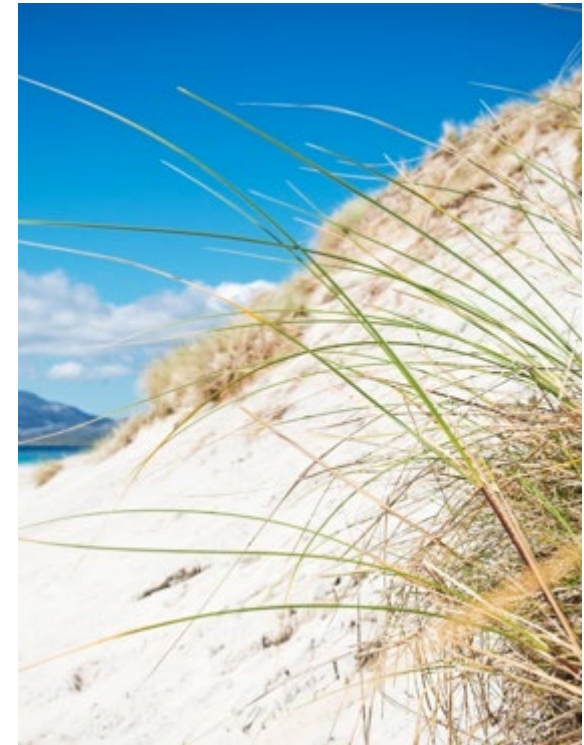


Gold Coast Coastal Hazard Adaptation Strategy

24 July 2020 – LGAQ webinar

Tale of two CHASs

- Northern Gold Coast (low lying RAMSAR wetland) v Southern Gold Coast (established urban footprint – canals)
- Ocean beach open coast v waterways, canals, lakes,
- Communications: internal v external
- CHAS development work v implementation actions.



CHAS assets at risk

Key Assets	Inundation (10,000 year Average Return Interval) [†]	Erosion (100 year Average Return Interval)
Roads	31.5 km	55.6 km
Stormwater	* NA	36.7 km
Water pipe	* NA	265 km
Electrical Junction	75	177
Emerging Community	95 ha	124 ha
Open Space	1392 ha	1923 ha
Conservation area	5157 ha	6207 ha

* Inundation of pipes and pumps are being further investigated in Phase 4 of this project.

[†] 10,000 year ARI inundation is similar to current 100 year ARI plus sea level rise

564 properties that front the 52 km of coastline

14,762 properties along the 270 km of canals and waterways

Hazard extents

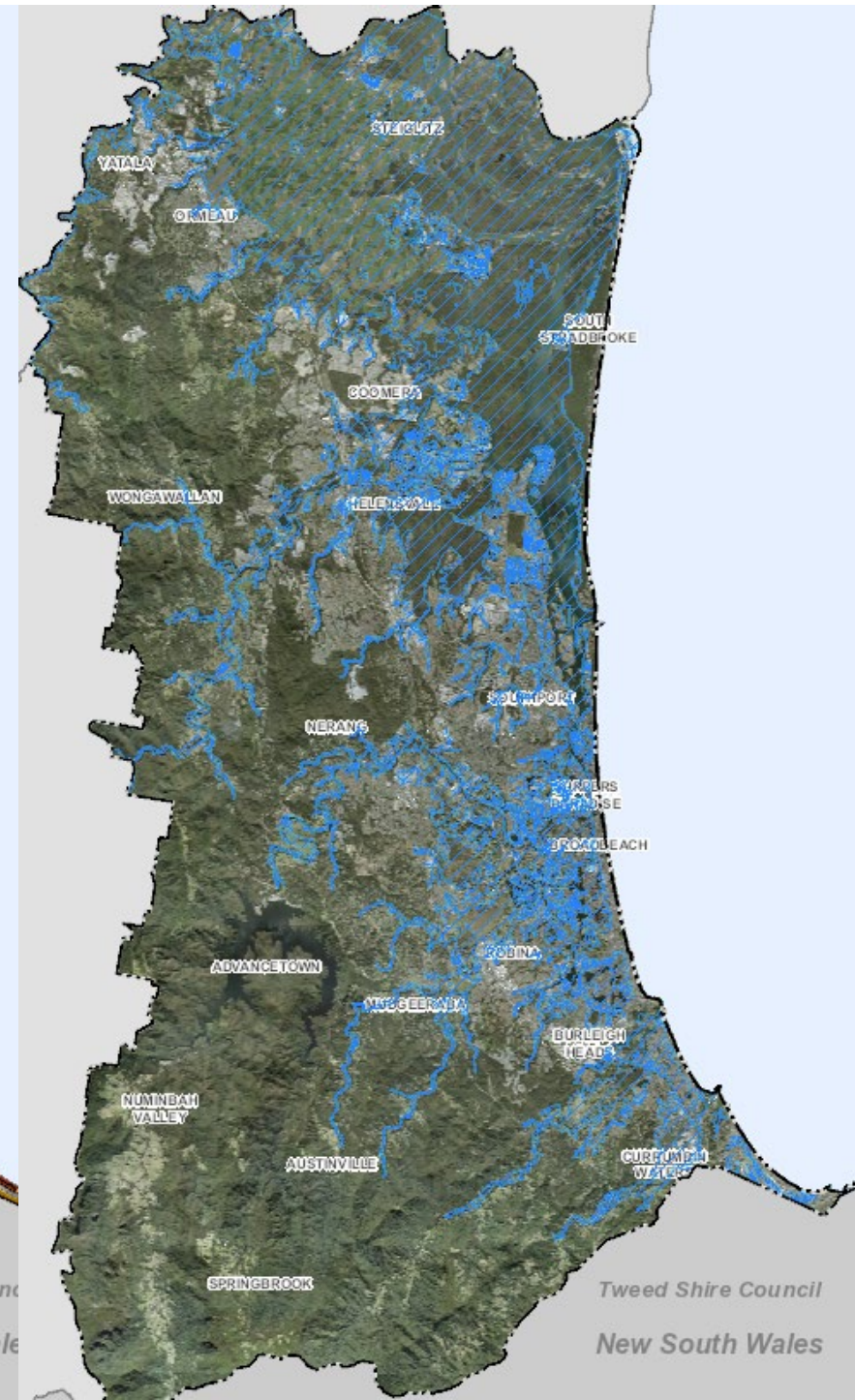
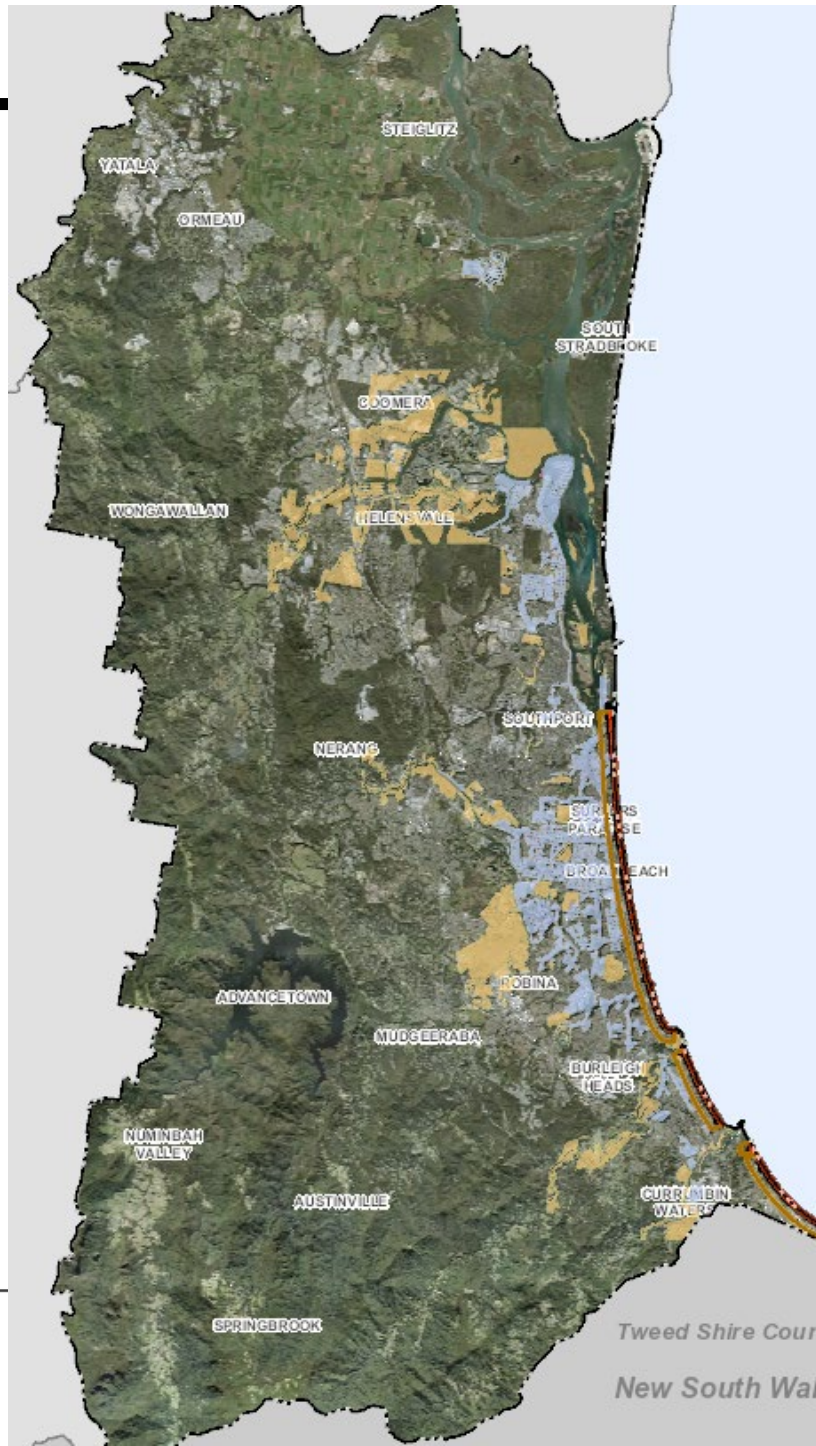
Coastal Hazard

Flood Hazard

Waterway setbacks

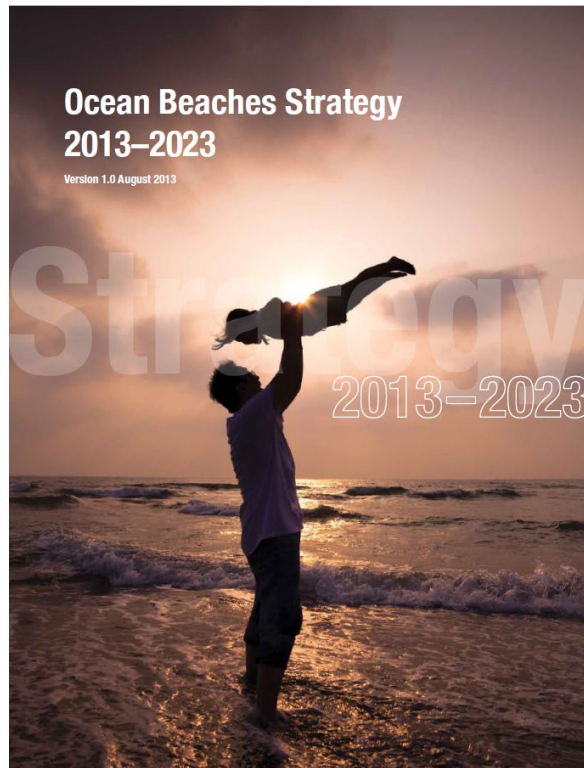
- Low
- Medium
- High

Refer to planning scheme for further details

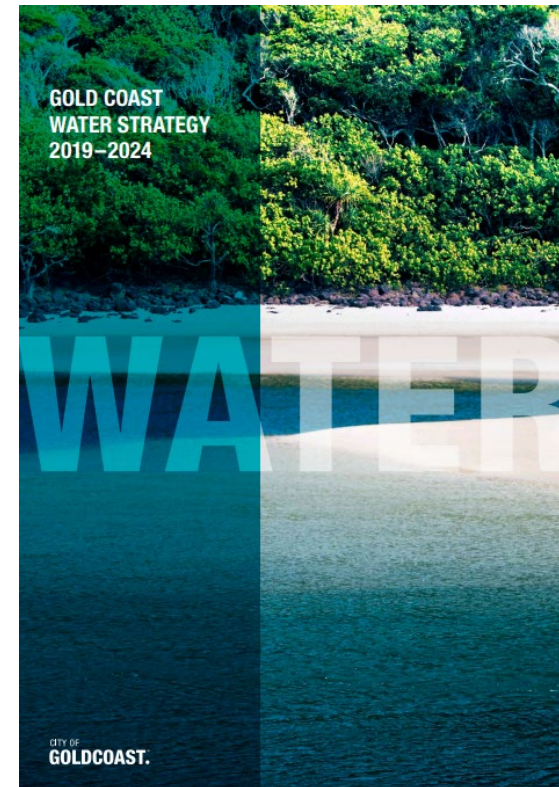


Ocean v Waterways

- Seawall
 - Sand pumping
 - Artificial reef
- Canal approval
 - Storm water management
 - Natural bank rehabilitation

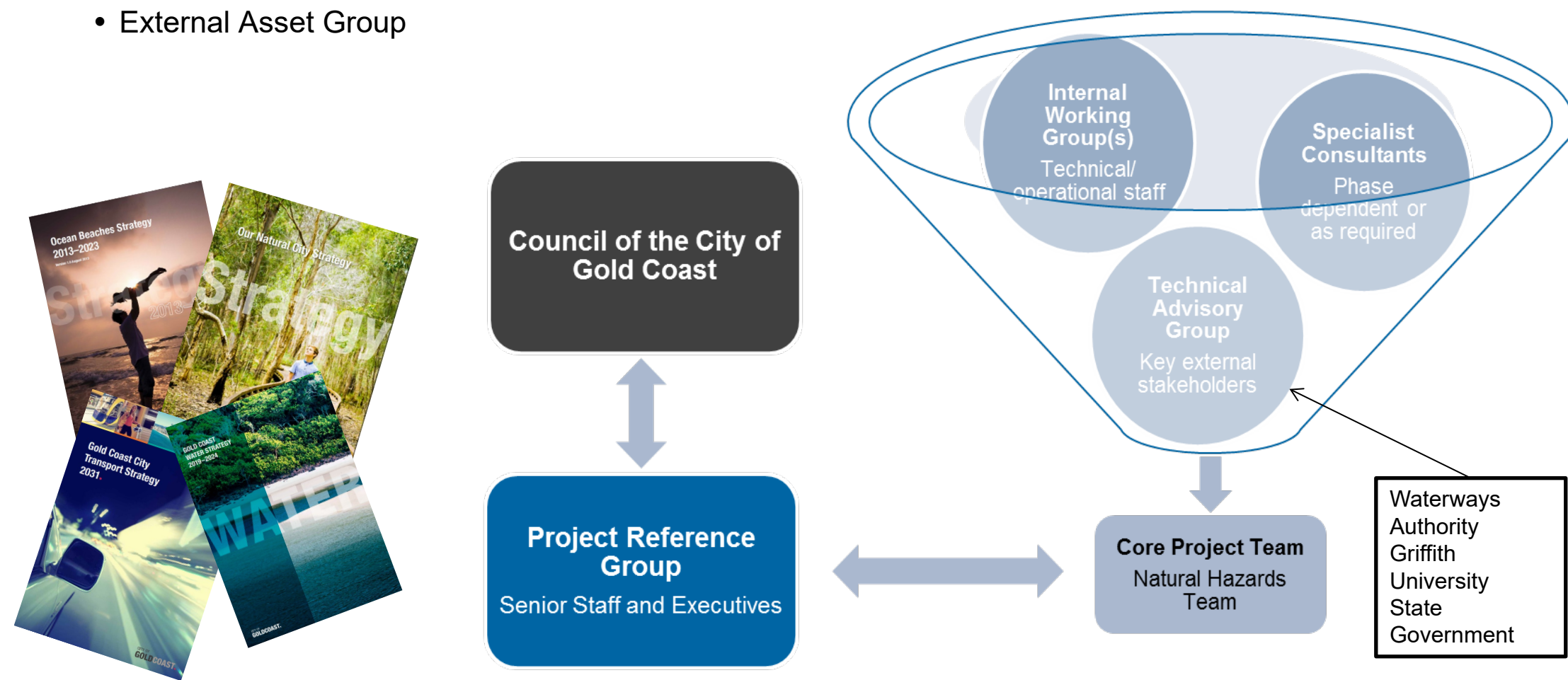


CITY OF
GOLDCOAST.



Communications

- Technical Working Group
- Project Reference Group
- External Asset Group



Next steps

- Complete phase 5-7
- Develop draft CHAS plan (Phase 8)
- Community consultation
- Develop program of works with key roles and responsibilities (both Council and external)
- Apply for funding to implement plan
- Undertake hydrodynamic modelling of hot spots
- Amend corporate strategies to consider hazards



Contact details

PO Box 5042 Gold Coast MC QLD 9729

P 1300 GOLDCOAST

E mail@goldcoast.qld.gov.au

W cityofgoldcoast.com.au

